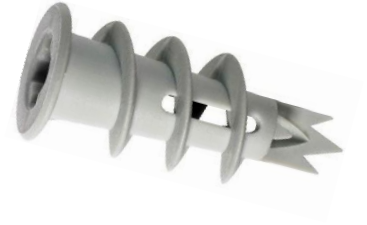


The plasterboard plug 'INTEGRAL' is made from a special GFK-material. It is characterised by its particularly high stability as soon as it is screwed in. Special advantages: The plug is equipped with an integrated drill point. No additional setting tool is required when screwing in, a standard Phillips screwdriver is sufficient. As the maximum working depth is only 30 mm, the plug can even be screwed directly into plasterboard that is only fixed tightly to the wall with adhesive or thin battens. The collar on the head prevents it from slipping through the drill hole. This plug is suitable for use with chipboard screws. Another plus: the plasterboard plug can also be used in gypsum fibreboard (for example Fermacell) and aerated concrete. To do this, pre-drill with a \varnothing 6 mm drill, screw in the plug with a screwdriver and fasten the object with the screw.

Temperature resistance: -40°F to +158°F

Safety coefficient: 5



Product specification

Article number	Dimensions \varnothing x L mm	Bit adapter	Box contents	outer carton
12 100	13 x 30	Pozi 2	200 pcs.	4.000 pcs.

Extraction values in kilo-Newton^{*}

Plug / thickness plasterboard \varnothing	Plasterboard
13 / 9,5	0,46 kN
13 / 12,5	0,57 kN
13 / 2 * 12,5	0,75 kN

* All data is based on values determined during factory tests by Huefner-Duebel GmbH. They serve only as general technical installation information and do not constitute a building authority approval. The possible applications must be checked on site and adapted to the conditions.

Important: The length of the respective screw must be selected so that it fully penetrates the plug and protrudes from the plug tip by at least its own diameter.

CONTACT US

☎ +49 (0) 3622 92040
✉ office@huefner-duebel.de

OUR ADDRESS

Gothaer Straße 50
D-99880 Waltershausen

ONLINE PRESENCE

🌐 www.huefner-duebel.de
f #Hüfner-Dübel GmbH